

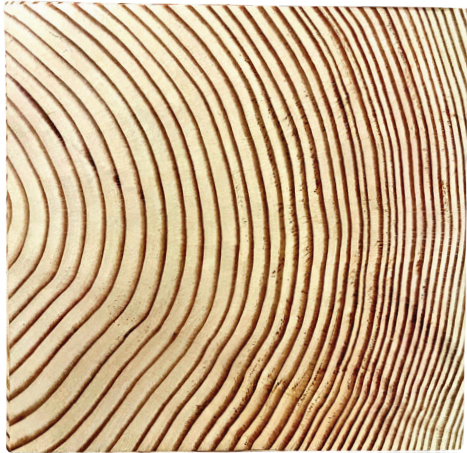
DOUGLAS FIR CUSTOM TIMBERS

*Timber images are for reference only, and are not exactly to scale.

We always keep Douglas Fir Timbers in stock, because their fantastic strength-to-weight ratio, incredible durability, and high level of flexibility make them the top choice for many builders, designers, and architects. With one of the largest four sided planers in Ontario, we can guarantee square dressed timbers up to 16" x 24", and up to 40' long.

FREE OF HEART CENTRE (FOHC)

BOXED HEART TIMBER



PROPERTIES:

Free of Heart Centre (FOHC) Timbers are milled from larger logs, without the heart centre of the tree (or, no "bullseye," as seen above).

Since the grain does not have a "centre" to shrink around, FOHC Timbers are less likely to twist (warp), or "check" (crack).

A much larger log is needed to mill this piece of wood, so these Timbers are typically more costly.

*ask a member of our sales team for details



PROPERTIES:

If you don't specify FOHC in your order, you will get Boxed Heart. Boxed Heart will have the pith (heart centre of the tree) in the Timber. This is a more economic choice.

Boxed Heart Timbers can be more prone to checking and twisting – but they are still remarkably tough, with great screw/nail holding capabilities, and the ability to withstand many years of harsh weather conditions.

ALL OF OUR TIMBERS ARE GRADED AS #1 & BETTER:

We've made #1 & Better (NLGA Rules) our standard because we want every piece of Timber we produce for you to look great, and score highest on the strength grade. This means that any knots in your Timber will be sound (no loose knots, to avoid rot) and well-spaced (for optimal structural integrity).

SPECIAL ORDER YOUR SELECT STRUCTURAL:

All of our Timbers are high quality (#1 & Better), but if you're looking for the highest grade of lumber possible, **ask us about ordering Select Structural Timber**: containing the least number of knots, which are only permitted in certain number and sizes as long as they are sound, and well-spaced.

*ASK US ABOUT YOUR OPTIONS FOR:

- White Pine, Cedar, and Hemlock
- Dressed Four Sides
- Rough Sawn
- Fresh Sawn
- Pressure Treated

